

art. **0202**

B R E S

- Bulini rettificati, **serie standard**
- Single lip cutter, standard length

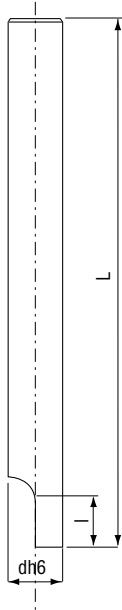
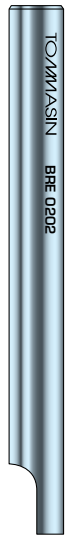
| | | | | | | | | |
|----------|----|----|----|----|----|----|----|----|
| d | 2 | 3 | 4 | 5 | 6 | 8 | 10 | 12 |
| L | 40 | 40 | 40 | 50 | 60 | 80 | 80 | 80 |
| l | 3 | 3 | 4 | 5 | 5 | 7 | 8 | 8 |

art. **0203**

B R E L

- Bulini rettificati, **serie lunga**
- Single lip cutter, long series

| | | | | | | | | |
|----------|-----|-----|-----|-----|-----|-----|-----|-----|
| d | 3 | 4 | 5 | 6 | 8 | 10 | 12 | 14 |
| L | 100 | 100 | 100 | 100 | 100 | 100 | 100 | 100 |
| l | 4 | 5 | 7 | 8 | 10 | 13 | 16 | 18 |



Qualità di M.D. - Composizione e caratteristiche
Mechanical characteristics of solid carbide

| Codice ISO | Codice USA | Dimensione grana | TiC/ Ta(Nb)C | Legante | Densità | Durezza | | | Resistenza alla flessione TRS | | K _{1c} * SEVNB |
|------------|------------|-------------------|-----------------|---------|-------------------|---------|------|------|-------------------------------|---------|----------------------------|
| | | | | | | HV10 | HV30 | HRA | MPa | P.S.i. | |
| | | | | (%) | g/cm ³ | | | | | | |
| K10-K20 | C-2 | ultrafine | - | 8,2 | 14,55 | 1970 | 1930 | 93,7 | 4400 | 638.000 | 7,5 |
| K10-K30 | C-2 | ultrafine | - | 12,0 | 14,10 | 1760 | 1730 | 92,7 | 4600 | 667.000 | 7,5 |
| K05-K10 | C-3 | micrograna | - | 6,0 | 14,80 | 1820 | 1790 | 93,0 | 3500 | 507.500 | 8,2 |
| K10-K30 | C-3 | micrograna | - | 7,5 | 14,75 | 1750 | 1720 | 92,6 | 3500 | 507.500 | 8,6 |
| K20-K40 | C-2 | micrograna | - | 10,0 | 14,50 | 1610 | 1590 | 91,9 | 3700 | 536.000 | 9,4 |
| | | | | | 14,45 | 1680 | 1660 | 92,3 | 3700 | 536.000 | 9,4 |
| K20-K40 | C-3 | micrograna | - | 9,0 | 14,55 | 1610 | 1590 | 91,9 | 3600 | 522.000 | 10,4 |
| K15 | C-2 | micrograna | - | 6,0 | 15,00 | 1650 | 1630 | 92,1 | 2600 | 377.000 | 10,2 |
| K10 | C-3 | fine | - | 5,6 | 14,95 | 1760 | 1730 | 92,7 | 2150 | 311.900 | 9,2 |
| K15 | C-2 | fine | - | 6,0 | 14,95 | 1670 | 1650 | 92,2 | 2200 | 333.500 | 9,9 |

Classificazione della dimensione grana WC

| Dimensione grana WC (um) | Classificazione |
|--------------------------|-----------------|
| < 0,2 | nano |
| 0,2 - 0,5 | ultrafine |
| 0,5 - 0,8 | micrograna |
| 0,8 - 1,3 | fine |
| 1,3 - 2,5 | media |
| 2,5 - 6,0 | grossa |
| > 6,0 | extragrossa |